



Phil Vaughn
Windows to the Wild
Executive Producer

NEW ADVENTURES IN THE WILD AHEAD

If you produce a show that's popular enough to reach a 20th season, you could be forgiven for resting on your laurels. However, the producers of *WINDOWS TO THE WILD* decided that this landmark season was a good time to shake things

up. Since August, New Hampshire PBS has been releasing new *WINDOWS TO THE WILD* stories in bite-sized, digital-first videos on YouTube and the PBS App. Those stories will be repackaged with others to make 30-minute episodes which will premiere Thursday, October 9th on NHPBS.

"We're able to tell more stories, and I think the stories are what people really tune in to see," said Executive Producer Phil Vaughn, who estimates the *WINDOWS* team has covered three to four times more tales of outdoor adventure than they have in previous years. Vaughn said he hopes this new approach will make *WINDOWS* easier to watch and more accessible for audiences old and new.

When season 20 premieres on NHPBS, episodes will still be half an hour long, but instead of following one narrative, each episode will feature multiple stories. It's a change that Vaughn said had its challenges, but that he ultimately came to appreciate. "It's hard to reel back sometimes, when you're used to a half-hour," he laughed, "but with a six or seven-minute story, you can really keep focus and do it in an entertaining way. I just found that I really enjoy that."

No matter the length of the story, the formula for success remains the same: the story should be personal and be about the outdoors. "People can see themselves in the stories, in the outdoors," said Vaughn, "and we're trying to take the viewers to a place that they can either go to themselves or would like to go to."

Stories this season include another hike with Little Foot—a little girl who hikes very big mountains, a personal gardening project that became a public

sanctuary, an exploration of the Granite State's moose population with a wildlife photographer, and a day spent with Jack the Kid Conservationist—a 15-year-old who's been advocating for orangutans ever since a trip to the zoo when he was six.

"'Outdoors' means different things to different people," Vaughn noted. "For some people, it means being able to go out in your backyard and work in the garden; for others it means a long trek through the White Mountains."

This attitude reflects an idea that's become a major theme over the show's 20 years—that the outdoors is for everyone. Vaughn credits the approachable nature of *WINDOWS TO THE WILD*'s host Willem Lange with engaging viewers who might have found exploring the outdoors intimidating. "We have a host who's 90 years old, possibly the oldest television host in the country," noted Vaughn.

Like many of his guests and viewers, Lange might not be able to do everything he once did, but he's still going to make the most of his time in the wild. For season 20, Lange rowed a dory, traipsed through Shaker Village in Canterbury and interviewed teenagers on the longest ice skating loop in Vermont. "Sometimes we have to remind him that we do have a timeline, and the sun is going down," Vaughn said fondly.

With the roll back in federal funding for public media, unique local programs like *WINDOWS TO THE WILD* are facing an uncertain path forward. Viewers can help secure the future of environmental, nature and outdoor programming by donating to the Willem Lange Endowment Fund. You can use this QR code or visit nhpbs.org/windows.

The 20th season of *WINDOWS TO THE WILD* will premiere on Thursday, October 9th at 8 PM on NHPBS. Episodes, including digital shorts, can also be streamed for free through the PBS App.



NHPBS PRIMETIME PICKS



**Great Performances:
The Magic of Grace Bumbry**
FRI Oct 3 | 9 PM NHPBS

Discover Grace Bumbry's inspiring rise to global opera fame. Spotlighting her historic performances, the film explores the racial barriers she overcame to triumph in her 1966 performance in the title role of *Carmen*.



Maigret on Masterpiece
SUN Oct 5 | 9 PM NHPBS

Meet Chief Inspector Maigret as he solves Paris's most complex crimes using unorthodox methods and a fierce sense of justice. To prevail, he must outwit the city's most ruthless criminals while confronting his own troubled past.



Windows to the Wild Season 20
THU Oct 9 | 8 PM NHPBS

Hit the trail with host Willem Lange for the 20th season of *WINDOWS TO THE WILD*. Stories include hiking by glowstick, skating Vermont's longest ice loop, stargazing under Maine's darkest skies and many more inspiring stories that blend nature, local culture and human connection in unexpected ways.



**American Masters –
Marlee Matlin: Not Alone Anymore**
TUE Oct 14 | 9 PM NHPBS

Explore Marlee Matlin's life as a groundbreaking performer. Her meteoric rise to fame began when she became the first Deaf actor to win an Academy Award, making her America's de-facto representative of the Deaf community.



**Nature –
Walrus: Life on Thin Ice**
WED Oct 22 | 8 PM NHPBS

The walrus is one of the Arctic's most enigmatic and social animals, relying on sea ice to live. Follow a paleontologist who embarks on an Arctic adventure to see how these mammals are coping in a warming world.



American Experience: Kissinger
MON Oct 27 | 9 PM NHPBS

Explore the life of the brilliant powerbroker who rose to the topmost echelons of American diplomacy. Revered or reviled, Henry Kissinger's contradictions reflect those at the heart of America's foreign policy in the second half of the 20th century.

5 CHANNEL SPOTLIGHT

NO CABLE? NO PROBLEM. WATCH ALL NHPBS CHANNELS AT NHPBS.ORG/LIVESTREAM



BRIAN & MAGGIE

SUN Oct 5 | 8 PM NHPBS

When two old friends—journalist Brian Walden and Prime Minister Margaret Thatcher—come together for their last-ever TV interview, little do they realize they're about to embark on one of the most famous political exchanges of all time. Starring Steve Coogan and Harriet Walter, this tense drama counts the cost of having friends in high places.



THE GOLD ON MASTERPIECE

TUE Oct 7 | 9 PM NHPBS EXPLORE

What began as a routine armed robbery turned into one of the biggest heists in British history. Inspired by true events, this gripping drama uncovers the 1983 Brink's-Mat robbery in London and the decades-long ripple effects that followed.



KITCHEN CURIOUS WITH VIVIAN HOWARD

FRI Oct 3 | 9 PM NH CREATE

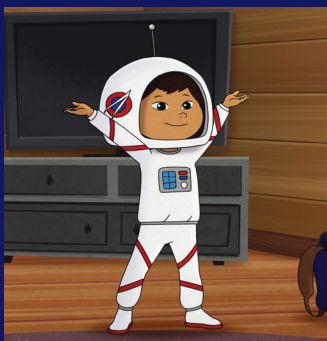
Vivian Howard (*A Chef's Life*) tackles the everyday questions we face in the kitchen, including why cast iron is still king and how pasta can save the planet. She invites viewers to rethink what they cook, why it matters and how a little knowledge and a lot of joy can transform meals.



ART21: ART IN THE 21ST CENTURY SEASON 12

SUN Oct 19 | 10 PM NH WORLD

Twelve of today's most acclaimed contemporary artists use art to address the pressing questions of our time. This landmark season builds upon a quarter century of shaping how audiences experience art and artists today. Featured artists include Sophie Calle, Sin Wai Kin, Njideka Akuyili Crosby and many more.



MOLLY OF DENALI HALLOWEEN EPISODE

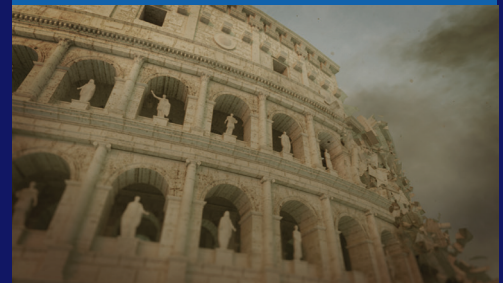
WED Oct 1 | 3 PM NHPBS KIDS

As Molly gets ready for Halloween, she teaches her friend Jake why regalia is not a costume. Hang out with the NHPBS Kids Club at the Halloween Howl in Concord on Friday, October 24th. Find us by the Capitol Center for the Arts, and mention the Mystery Code "pumpkin patch" to be entered into a Kids Club raffle!

THE PLACE FOR BIG IDEAS



INDIE LENS – CRACKING THE CODE: PHIL SHARP AND THE BIOTECH REVOLUTION
MON Oct 6 | 10 PM NHPBS



SECRETS OF THE DEAD:
THE RISE AND FALL OF THE COLOSSEUM
WED Oct 8 | 10 PM NHPBS



SECRETS OF THE DEAD:
CLEOPATRA'S LAST TEMPLE
WED Oct 15 | 10 PM NHPBS



NATURE: DIARY OF A MOUNTAIN LION
WED Oct 29 | 8 PM NHPBS



NOVA: SUPERFLOODS
WED Oct 29 | 9 PM NHPBS

ON-AIR | MOBILE | ONLINE | CLASSROOMS | COMMUNITY

	6:30 PM	7:00 PM	7:30 PM	8:00 PM	8:30 PM	9:00 PM	9:30 PM	10:00 PM
Wed. 10/1	Samantha Brown's Places to Love	PBS News Hour		Patience		Professor T (UK)		Grantchester On Masterpiece**
Thu. 10/2	Samantha Brown's Places to Love	PBS News Hour		Father Brown		Sister Boniface Mysteries		The Brokenwood Mysteries**
Fri. 10/3	Samantha Brown's Places to Love	PBS News Hour		Finding Your Roots Latin Roots		American Experience Hard Hat Riot		
Sat. 10/4	The Lawrence Welk Show*	Finding Your Roots Latin Roots		Reagan: American Experience				Iconic America: Our Symbols & Stories with David Rubenstein**
Sun. 10/5	Antiques Roadshow*	Big Cats 24/7		NOVA Human: Neanderthal Encounters		Ancient Skies Gods and Monsters		Sacred Planet with Gulnaz Khan**
Mon. 10/6	Samantha Brown's Places to Love	PBS News Hour		Midsomer Murders		Midsomer Murders	Miss Fisher's Murder Mysteries	
Tue. 10/7	Samantha Brown's Places to Love	PBS News Hour		Maigret On Masterpiece		The Gold On Masterpiece		World On Fire On Masterpiece**
Wed. 10/8	Samantha Brown's Places to Love	PBS News Hour		Patience		Brian and Maggie		Grantchester On Masterpiece**
Thu. 10/9	Samantha Brown's Places to Love	PBS News Hour		Father Brown		Sister Boniface Mysteries		The Brokenwood Mysteries**
Fri. 10/10	Samantha Brown's Places to Love	PBS News Hour		Finding Your Roots Family Recipes		The American Buffalo**		
Sat. 10/11	The Lawrence Welk Show*	Finding Your Roots Family Recipes		Reagan: American Experience				Iconic America: Our Symbols & Stories with David Rubenstein**
Sun. 10/12	Antiques Roadshow*	Big Cats 24/7		NOVA Human: Into The Americas		Ancient Skies Finding The Center		Secrets of the Dead** The Rise & Fall of the Colosseum
Mon. 10/13	Samantha Brown's Places to Love	PBS News Hour		Midsomer Murders		Midsomer Murders	Miss Fisher's Murder Mysteries	
Tue. 10/14	Samantha Brown's Places to Love	PBS News Hour		Maigret On Masterpiece		The Gold On Masterpiece		World On Fire On Masterpiece**
Wed. 10/15	Samantha Brown's Places to Love	PBS News Hour		Patience		Brian and Maggie		Grantchester On Masterpiece**
Thu. 10/16	Samantha Brown's Places to Love	PBS News Hour		Father Brown		Sister Boniface Mysteries		The Brokenwood Mysteries**
Fri. 10/17	Samantha Brown's Places to Love	PBS News Hour		Finding Your Roots The Butterfly Effect		The American Buffalo**		
Sat. 10/18	The Lawrence Welk Show*	Finding Your Roots The Butterfly Effect		LBJ: American Experience				Iconic America: Our Symbols & Stories with David Rubenstein**
Sun. 10/19	Antiques Roadshow*	Nature Dracula's Hidden Kingdom		NOVA Human: Building Empires		Ancient Skies Our Place in the Universe		Secrets of the Dead** Cleopatra's Last Temple
Mon. 10/20	Samantha Brown's Places to Love	PBS News Hour		Midsomer Murders		Midsomer Murders	Miss Fisher's Murder Mysteries	
Tue. 10/21	Samantha Brown's Places to Love	PBS News Hour		Maigret On Masterpiece		The Gold On Masterpiece		World On Fire On Masterpiece**
Wed. 10/22	Samantha Brown's Places to Love	PBS News Hour		Grantchester On Masterpiece		Miss Austen On Masterpiece		Annika On Masterpiece**
Thu. 10/23	Samantha Brown's Places to Love	PBS News Hour		Father Brown		Sister Boniface Mysteries		The Brokenwood Mysteries**
Fri. 10/24	Samantha Brown's Places to Love	PBS News Hour		Finding Your Roots Moving On Up		Benjamin Franklin**		
Sat. 10/25	The Lawrence Welk Show*	Finding Your Roots Moving On Up		LBJ: American Experience				Iconic America: Our Symbols & Stories with David Rubenstein**
Sun. 10/26	Antiques Roadshow*	Nature Walrus: Life On Thin Ice		NOVA Ancient Desert Death Trap		NOVA Nazca Desert Mystery		Secrets of the Dead** Cracking The Queen's Code
Mon. 10/27	Samantha Brown's Places to Love	PBS News Hour		Midsomer Murders		Midsomer Murders	Miss Fisher's Murder Mysteries	
Tue. 10/28	Samantha Brown's Places to Love	PBS News Hour		Maigret On Masterpiece		The Gold On Masterpiece		World On Fire On Masterpiece**
Wed. 10/29	Samantha Brown's Places to Love	PBS News Hour		Grantchester On Masterpiece		Miss Austen On Masterpiece		Annika On Masterpiece**
Thu. 10/30	Samantha Brown's Places to Love	PBS News Hour		Father Brown		Sister Boniface Mysteries		The Brokenwood Mysteries**
Fri. 10/31	Samantha Brown's Places to Love	PBS News Hour		Finding Your Roots Finding My Roots		Benjamin Franklin**		

Please Note: Programs on NHPBS Explore begin before 6:30 PM when marked *. Programs end at 10:30 PM unless marked **
This program schedule is subject to change. Go to nhpbs.org/schedule for the most up-to-date listing of programs.

NH PBS OCTOBER 2025 PROGRAM SCHEDULE

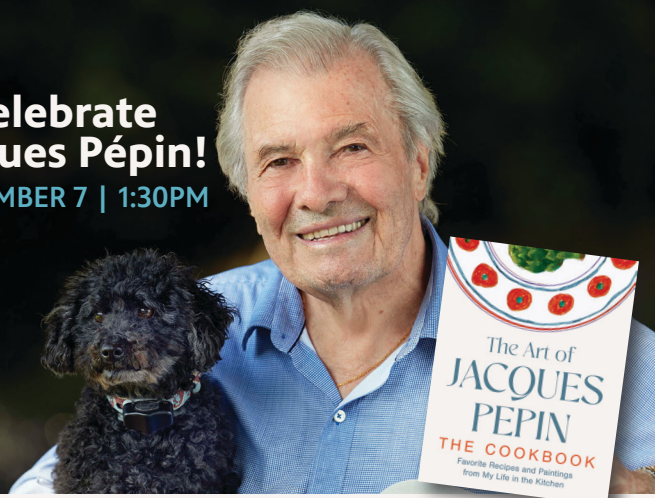
	6:30 PM	7:00 PM	7:30 PM	8:00 PM	8:30 PM	9:00 PM	9:30 PM	10:00 PM
Wed. 10/1	PBS News Hour*	Weekends with Yankee	Borealis	Big Cats 24/7		NOVA Human: Neanderthal Encounters		Sacred Planet with Gulnaz Khan**
Thu. 10/2	PBS News Hour*	Weekends with Yankee	Weekends with Yankee	Windows to the Wild Mountain Mysteries	Seniority Authority Think Strong, Age Strong	Reagan: American Experience**		
Fri. 10/3	PBS News Hour*	Weekends with Yankee	Rick Steves' Europe	Washington Week with the Atlantic	Firing Line with Margaret Hoover	Great Performances The Magic of Grace Bumbry		American Masters Julia Alvarez: A Life Reimagined
Sat. 10/4	To Dine with Kate Sullivan	Miss Fisher's Murder Mysteries		Father Brown		Sister Boniface Mysteries		The Brokenwood Mysteries**
Sun. 10/5	Seniority Authority Think Strong, Age Strong	Patience		Brian and Maggie		Maigret On Masterpiece		The Gold On Masterpiece**
Mon. 10/6	PBS News Hour*	Weekends with Yankee	Seniority Authority Time to Talk	Antiques Roadshow		Antiques Roadshow		Independent Lens** Cracking the Code
Tue. 10/7	PBS News Hour*	Weekends with Yankee	People of the North	Finding Your Roots Family Recipes		Finding Your Roots Anchormen		Frontline**
Wed. 10/8	PBS News Hour*	Weekends with Yankee	Doug's Geology Journal	Big Cats 24/7		NOVA Human: Into The Americas		Secrets of the Dead** The Rise & Fall of the Colosseum
Thu. 10/9	PBS News Hour*	Weekends with Yankee	Weekends with Yankee	Windows to the Wild Waterways & Wonders	Seniority Authority Time to Talk	Reagan: American Experience**		
Fri. 10/10	PBS News Hour*	Weekends with Yankee	Rick Steves' Europe	Washington Week with the Atlantic	Firing Line with Margaret Hoover	King of Them All: The Story of King Records		Earth, Wind and Fire: iHeart Radio Live**
Sat. 10/11	To Dine with Kate Sullivan	Miss Fisher's Murder Mysteries		Father Brown		Sister Boniface Mysteries		The Brokenwood Mysteries**
Sun. 10/12	Seniority Authority Time to Talk	Patience		Brian and Maggie		Maigret On Masterpiece		The Gold On Masterpiece**
Mon. 10/13	PBS News Hour*	Weekends with Yankee	Seniority Authority Rightsizing	Antiques Roadshow		Antiques Roadshow		P.O.V.** A Mother Apart
Tue. 10/14	PBS News Hour*	Weekends with Yankee	People of the North	Finding Your Roots The Butterfly Effect		American Masters** Marlee Matlin: Not Alone Anymore		
Wed. 10/15	PBS News Hour*	Weekends with Yankee	Doug's Geology Journal	Nature Dracula's Hidden Kingdom		NOVA Human: Building Empires		Secrets of the Dead** Cleopatra's Last Temple
Thu. 10/16	PBS News Hour*	Weekends with Yankee	Weekends with Yankee	Windows to the Wild From Backyards to Bedrock Gardens	Seniority Authority Rightsizing	LBJ: American Experience**		
Fri. 10/17	PBS News Hour*	Weekends with Yankee	Rick Steves' Europe	Washington Week with the Atlantic	Firing Line with Margaret Hoover	Art21: Art in the Twenty-First Century		Art & Science Collide**
Sat. 10/18	To Dine with Kate Sullivan	Miss Fisher's Murder Mysteries		Father Brown		Sister Boniface Mysteries		The Brokenwood Mysteries**
Sun. 10/19	Seniority Authority Rightsizing	Patience		Miss Austen On Masterpiece		Maigret On Masterpiece		The Gold On Masterpiece**
Mon. 10/20	PBS News Hour*	Weekends with Yankee	Seniority Authority Rethinking Aging	Antiques Roadshow		Antiques Roadshow		Independent Lens** Ratified
Tue. 10/21	PBS News Hour*	Weekends with Yankee	People of the North	Finding Your Roots Moving On Up		Breaking The Deadlock		Frontline**
Wed. 10/22	PBS News Hour*	Weekends with Yankee	Doug's Geology Journal	Nature Walrus: Life On Thin Ice		NOVA Ancient Desert Death Trap		Secrets of the Dead** Cracking The Queen's Code
Thu. 10/23	PBS News Hour*	Weekends with Yankee	Weekends with Yankee	Windows to the Wild Echoes of Granite State History	Seniority Authority Rethinking Aging	LBJ: American Experience**		
Fri. 10/24	PBS News Hour*	Weekends with Yankee	Rick Steves' Europe	Washington Week with the Atlantic	Firing Line with Margaret Hoover	Leonardo da Vinci**		
Sat. 10/25	To Dine with Kate Sullivan	Miss Fisher's Murder Mysteries		Father Brown		Sister Boniface Mysteries		The Brokenwood Mysteries**
Sun. 10/26	Seniority Authority Rethinking Aging	Agatha Christie: Lucy Worsley on the Mystery Queen		Miss Austen On Masterpiece		Maigret On Masterpiece		The Gold On Masterpiece**
Mon. 10/27	PBS News Hour*	Weekends with Yankee	Seniority Authority The Power of Purpose	Antiques Roadshow		American Experience Kissinger: Part One		
Tue. 10/28	PBS News Hour*	Weekends with Yankee	People of the North	Finding Your Roots Finding My Roots		American Experience Kissinger: Part Two		
Wed. 10/29	PBS News Hour*	Weekends with Yankee	Doug's Geology Journal	Nature Willow: Diary of a Mountain Lion		NOVA Superfloods		Secrets of the Dead** Chasing The Plague
Thu. 10/30	PBS News Hour*	Weekends with Yankee	Weekends with Yankee	Windows to the Wild Guardians of the Wild	Seniority Authority The Power of Purpose	Jimmy Carter: American Experience**		
Fri. 10/31	PBS News Hour*	Weekends with Yankee	Rick Steves' Europe	Washington Week with the Atlantic	Firing Line with Margaret Hoover	Leonardo da Vinci**		

Please Note: Programs on NHPBS begin before 6:30 PM when marked *. Programs end at 10:30 PM unless marked **
This program schedule is subject to change. Go to nhpbs.org/schedule for the most up-to-date listing of programs.

Watch online anytime at nhpbs.org | video.nhpbs.org

Celebrate Jacques Pépin!

NOVEMBER 7 | 1:30PM



NH PBS

New Hampshire PBS

268 Mast Road

Durham, NH 03824

NON-PROFIT ORG
U.S. POSTAGE
PAID
MANCHESTER, NH
PERMIT NO. 724

Join Jacques *online*, get your very own cookbook,
and let's have some culinary fun!

GET YOUR TICKETS
nhpbs.org/events

October 20 – 26 is National Estate Planning Awareness Week!

Celebrate National Family History Month by
preparing for your family's future.

nhpbs.org/freewill

NH PBS

| FREEWILL



OCT 2025

TRUSTED. VALUED. ESSENTIAL.