



NOTES FROM NOTTINGHAM

OUR HOMETOWN returns to New Hampshire PBS this November, with a program highlighting the Rockingham County town of Nottingham. The program, a favorite of NHPBS viewers, highlights the unique histories and cultural distinctions of our state's 221 towns and 13 cities.

Established in 1722, Nottingham is celebrating its 300th anniversary this year. The town boasts more than a dozen lakes and ponds, borders scenic Pawtuckaway State Park and was the hometown of four Revolutionary War generals.

Program host Rebecca Rule resides in Northwood, the next town over to the north. Despite 45 years living in the area, the visit to her neighboring town still yielded surprises.

"There's a four-sided granite monument in the middle of the town, with the names of four residents of the community — all Revolutionary War generals — represented on that monument," said Rule. "But — here's the twist — their names are all inscribed on the sides of the monument facing the houses they once lived in!"

As with all episodes of OUR HOMETOWN, the program was researched at length to better understand the community's history and current issues and to reveal its character. Rule and producer Schuyler Scribner spent their time in Nottingham listening to stories from a range of residents: librarians, authors, activists, students, town and school officials and small business owners.

"We know it's really the people that make up a vibrant small town," observes Scribner. "Nottingham may not have a physical downtown or traditional Main Street, but we still found a welcoming gathering space in

one local business that we explore in the episode: Liar's Paradise General Store & Pizzeria." Viewers will also learn more about a fully volunteer-run food pantry that assists Nottingham residents in need of supplemental food. [FULL DISCLOSURE: Scribner brought a firsthand perspective to this episode, as a Nottingham resident himself.]

Rule found Nottingham contains several neighborhoods and smaller areas with a sense of having something in common. "I think it's true of a lot of towns; you may be a bit isolated from the rest of the world, and so people find a way to get along," she says. "It's very quaint and a bit old-fashioned to have that sense of community, but it surprised and pleased me to see Nottingham has those pockets of community."

Beyond the 30-minute episode, airing November 17 at 9 PM, other stories about Nottingham are presented via shorter digital features, all available online. "The digital content is really designed to be a time capsule of that moment in time and of the stories people want to tell," said Scribner.

Rebecca Rule concurs that these personal and unique stories are the essence of the program.

"I'm always gratified by the welcome we receive wherever we go in the state," she said. "People are happy to connect us with their community members, allow us to use local facilities for filming or interviews, or even drive us around to local spots. People are tickled that we are there, and they want to share the stories of their communities."

Viewers can see all the OUR HOMETOWN episodes and expanded digital content at nhpbs.org/hometown. The next installment of OUR HOMETOWN, airing in spring 2023, will focus on Nashua.

NHPBS PRIMETIME PICKS



My Greek Table with Diane Kochilas

SAT Nov 5 | 1 PM NHPBS

Host and co-creator Diane Kochilas guides viewers on a robust and inviting exploration of the Greek landscape, including its people, food, history, traditions, and culture.



A Walk with Frank

THU Nov 10 | 9:30 PM NHPBS

A 70-year old Vietnam War veteran decides to walk across New York State to confront his demons while helping other survivors of PTSD take their first steps toward healing.



Taken Hostage:

American Experience

Nov 14 – 15 | 9 PM NHPBS

Explore how America's quarter-century of unwavering support for its ally, the Shah of Iran, and the violent Islamic revolution that overthrew him in 1979, set the stage for the Iran hostage crisis.



Our Hometown: Nottingham

THU Nov 17 | 9 PM NHPBS

Host Rebecca Rule explores this tucked-away community that is located in Rockingham County. Discover unique Nottingham stories — including the town's local gathering spot, a volunteer-run food pantry and four Revolutionary War generals.



Turkey Town

THU Nov 24 | 7:30 PM NHPBS

An unlikely population explosion has hit the Boston area: the wild turkey. TURKEY TOWN explains the comeback of the iconic bird, and explores the social and environmental consequences, both positive and negative, of their return.



Great Performances:

Josh Groban's Great Big Radio City Show
FRI Nov 25 | 9 PM NHPBS

Experience the world-renowned baritone performing songs from many musical genres alongside several special guest stars including Cyndi Lauper, Denée Benton, New York City Ballet principal dancer Tiler Peck and more.

5 CHANNEL SPOTLIGHT

OUR PRIMARY CHANNEL, NHPBS, IS NOW STREAMED LIVE AT [NHPBS.ORG/LIVESTREAM](https://nhpbs.org/livestream)



SURVIVING NEW ENGLAND'S GREAT DYING

THU Nov 3 | 9 PM **NHPBS**

Just prior to the Pilgrim's arrival, a plague decimated New England's coastal Native American population, altering the course of colonialism. This is the story of the Great Dying and how tribal leaders are learning from the past as they deal with the effects of today's pandemic.



HER WAR, HER STORY: WORLD WAR II

FRI Nov 4 | 9 PM **NHPBS EXPLORE**

Explore the stories of more than two dozen women's experiences during the war. From members of the U.S. Women's Army Corps to the civilian witnesses to the war in Europe, this hour-long film shows how women were equal to men in patriotism, service and steadfastness in critical moments.



COOK'S COUNTRY: SEASON 15

TUE Nov 29 | 3:30 PM **NH CREATE**

Join co-hosts Bridget Lancaster and Julia Collin Davison, along with test cooks as they cook regional specialties from across the U.S. Baked into the recipe segments are stories from local restaurants and home cooks who have mastered their regional favorites.



SKINDIGENOUS

MON Nov 14 | **NH WORLD**

Explore the art of tattooing as practiced by Indigenous people around the world. Using body art as a window into Native perspectives on life, identity and the natural world, each episode delves into a unique Indigenous culture to discover the tools, techniques, symbols and traditions that shape its tattooing art.

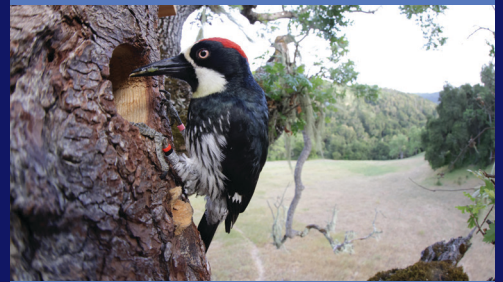


AN ARTHUR THANKSGIVING

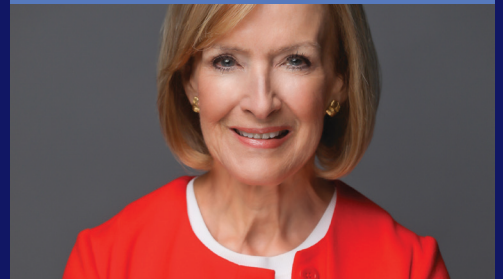
WED Nov 23 | 10:30 AM **PBS KIDS 24/7**

Arthur and his family are getting ready for Thanksgiving! But when Pal disappears to go on his own adventure, family, friends and the rest of Elwood City try to get Pal home. Will they be able to celebrate the best Thanksgiving yet?

MORE TO EXPLORE



Nature: Woodpeckers - The Hole Truth
WED Nov 2 | 8 PM **NHPBS**



VOTE 2022: PBS NewsHour
TUE Nov 8 | 8 PM **NHPBS**



Next at the Kennedy Center: Joni Mitchell
FRI Nov 18 | 9 PM **NHPBS**



American Masters: Buffy Sainte-Marie
TUE Nov 22 | 9 PM **NHPBS**



Tutankhamun: Allies & Enemies
WED Nov 23 | 8 PM **NHPBS**

ON-AIR | MOBILE | ONLINE | CLASSROOMS | COMMUNITY

NH PBS NOVEMBER 2022 PROGRAM SCHEDULE

	6:30 PM	7:00 PM	7:30 PM	8:00 PM	8:30 PM	9:00 PM	9:30 PM	10:00 PM
Tue. 11/1	PBS NewsHour*	Joseph Rosendo's Travelscope	Basic Black	Finding Your Roots Flight		Finding Your Roots Children of Exile		Frontline** Putin's War at Home
Wed. 11/2	PBS NewsHour*	Joseph Rosendo's Travelscope	Windows to the Wild Photographing Foliage at Zealand Falls	Nature Woodpeckers: The Hole Story		Nova Nazca Desert Mystery		Secrets of the Dead**
Thu. 11/3	PBS NewsHour*	Joseph Rosendo's Travelscope	Rick Steves' Europe	Windows to the Wild Photographing Foliage at Zealand Falls	Stories from the Stage	Surviving New England's Great Dying	The People's Protectors	
Fri. 11/4	PBS NewsHour*	Joseph Rosendo's Travelscope	Rick Steves' Europe	Washington Week	Firing Line with Margaret Hoover	Great Performances Ny Phil Reopening of David Geffen Hall		
Sat. 11/5	Ireland with Michael	Escape to the Chateau DIY		The Goes Wrong Show	Hope Street		Death In Paradise	
Sun. 11/6	Agatha Christie's: Poirot*			Miss Scarlet and the Duke On Masterpiece		Magpie Murders On Masterpiece		Annika On Masterpiece**
Mon. 11/7	PBS NewsHour*	Joseph Rosendo's Travelscope	Rick Steves' Europe	Antiques Roadshow		Antiques Roadshow		Independent Lens** Move Me
Tue. 11/8	PBS NewsHour*	Joseph Rosendo's Travelscope	Basic Black	VOTE 2022: Election Night Special**				
Wed. 11/9	PBS NewsHour*	Joseph Rosendo's Travelscope	Windows to the Wild Seek The Peak	Nature American Ocelot		Nova Crypto Decoded		Secrets of the Dead**
Thu. 11/10	PBS NewsHour*	Joseph Rosendo's Travelscope	Rick Steves' Europe	Windows to the Wild Seek The Peak	Stories from the Stage	Roads to Recovery Keeping Veterans Well	Walk with Frank	
Fri. 11/11	PBS NewsHour*	Joseph Rosendo's Travelscope	Rick Steves' Europe	Washington Week	Firing Line with Margaret Hoover	Uso - for the Troops		Songwriting with Soldiers**
Sat. 11/12	Ireland with Michael	Escape to the Chateau DIY		The Goes Wrong Show	Hope Street		Death In Paradise	
Sun. 11/13	Agatha Christie's: Poirot*			Miss Scarlet and the Duke On Masterpiece		Magpie Murders On Masterpiece		Annika On Masterpiece**
Mon. 11/14	PBS NewsHour*	Joseph Rosendo's Travelscope	Rick Steves' Europe	Antiques Roadshow		Taken Hostage: An American Experience Special**		
Tue. 11/15	PBS NewsHour*	Joseph Rosendo's Travelscope	Basic Black	Finding Your Roots Songs of the Past		Taken Hostage: An American Experience Special**		
Wed. 11/16	PBS NewsHour*	Joseph Rosendo's Travelscope	Windows to the Wild Outdoor Classroom	Nature Santa's Wild Home		Nova Zero to Infinity		Secrets of the Dead**
Thu. 11/17	PBS NewsHour*	Joseph Rosendo's Travelscope	Rick Steves' Europe	Windows to the Wild Outdoor Classroom	Stories from the Stage	Our Hometown: Nottingham	Native America	
Fri. 11/18	PBS NewsHour*	Joseph Rosendo's Travelscope	Rick Steves' Europe	Washington Week	Firing Line with Margaret Hoover	Next at the Kennedy Center A Joni Mitchell Songbook		American Masters**
Sat. 11/19	Ireland with Michael	Escape to the Chateau DIY		The Goes Wrong Show	Hope Street		Death In Paradise	
Sun. 11/20	Agatha Christie's: Poirot*			Miss Scarlet and the Duke On Masterpiece		Magpie Murders On Masterpiece		Annika On Masterpiece**
Mon. 11/21	PBS NewsHour*	Joseph Rosendo's Travelscope	Rick Steves' Europe	Antiques Roadshow		Antiques Roadshow		P.O.V.**
Tue. 11/22	PBS NewsHour*	Joseph Rosendo's Travelscope	Basic Black	Finding Your Roots Watchmen		American Masters**		
Wed. 11/23	PBS NewsHour*	Joseph Rosendo's Travelscope	Windows to the Wild My Hike with Laura Waterman	Tutankhamun: Allies & Enemies		Tutankhamun: Allies & Enemies		Secrets of the Dead**
Thu. 11/24	PBS NewsHour*	Joseph Rosendo's Travelscope	Turkey Town	Windows to the Wild My Hike with Laura Waterman	Stories from the Stage	Native America		Native America**
Fri. 11/25	PBS NewsHour*	Joseph Rosendo's Travelscope	Rick Steves' Europe	Washington Week	Firing Line with Margaret Hoover	Great Performances** Josh Groban's Great Big Radio City Show		
Sat. 11/26	Member Favorites							
Sun. 11/27	Member Favorites							
Mon. 11/28	PBS NewsHour*	Joseph Rosendo's Travelscope	Member Favorites**					
Tue. 11/29	PBS NewsHour*	Joseph Rosendo's Travelscope	Basic Black	Member Favorites**				
Wed. 11/30	PBS NewsHour*	Joseph Rosendo's Travelscope	Windows to the Wild Birding with Ray Brown	Member Favorites**				

Please Note: Programs on NHPBS begin before 6:30 PM when marked *. Programs end at 10:30 PM unless marked **
This program schedule is subject to change. Go to nhpbs.org/schedule for the most up-to-date listing of programs.

Watch online anytime at nhpbs.org | video.nhpbs.org

	6:30 PM	7:00 PM	7:30 PM	8:00 PM	8:30 PM	9:00 PM	9:30 PM	10:00 PM
Tue. 11/1	Mrs. Wilson On Masterpiece*	PBS NewsHour		Miss Scarlet and the Duke On Masterpiece		Magpie Murders On Masterpiece		Annika On Masterpiece**
Wed. 11/2	Samantha Brown's Places to Love	PBS NewsHour		Death In Paradise		Frankie Drake Mysteries		Luna & Sophie**
Thu. 11/3	Samantha Brown's Places to Love	PBS NewsHour		Shakespeare & Hathaway-Private Investigators		Agatha Christie's: Poirot**		
Fri. 11/4	Death In Paradise*	PBS NewsHour		After Action		Her War, Her Story: World War II		Open Studio with Jared Bowen
Sat. 11/5	The Lawrence Welk Show*	Finding Your Roots Flight		The People's Protectors		Warrior Tradition		Surviving New England's Great Dying
Sun. 11/6	Escape to the Chateau DIY*	Nature Woodpeckers: The Hole Story		Nova Nazca Desert Mystery		Civilizations		Finding Your Roots**
Mon. 11/7	Samantha Brown's Places to Love	PBS NewsHour		Midsomer Murders		Mallorca Files		RFDS: Royal Flying Doctor Service**
Tue. 11/8	Samantha Brown's Places to Love	PBS NewsHour		Miss Scarlet and the Duke On Masterpiece		Magpie Murders On Masterpiece		Annika On Masterpiece**
Wed. 11/9	Samantha Brown's Places to Love	PBS NewsHour		Death In Paradise		Frankie Drake Mysteries		Luna & Sophie**
Thu. 11/10	Samantha Brown's Places to Love	PBS NewsHour		Shakespeare & Hathaway-Private Investigators		Agatha Christie's: Poirot**		
Fri. 11/11	Samantha Brown's Places to Love	PBS NewsHour		Groundworks		Voces On PBS		Open Studio with Jared Bowen
Sat. 11/12	The Lawrence Welk Show*	Finding Your Roots War Stories		Walk with Frank		Homecoming: Sgt. Hamilton's Long Journey	Roads to Recovery Keeping Veterans Well	Charlotte Mansfield: A Woman Photographer Goes To War
Sun. 11/13	Escape to the Chateau DIY*	Nature American Ocelot		Nova Crypto Decoded		Civilizations		Finding Your Roots**
Mon. 11/14	Samantha Brown's Places to Love	PBS NewsHour		Midsomer Murders		Mallorca Files		RFDS: Royal Flying Doctor Service**
Tue. 11/15	Samantha Brown's Places to Love	PBS NewsHour		Miss Scarlet and the Duke On Masterpiece		Magpie Murders On Masterpiece		Annika On Masterpiece**
Wed. 11/16	Samantha Brown's Places to Love	PBS NewsHour		Death In Paradise		Frankie Drake Mysteries		Luna & Sophie**
Thu. 11/17	Samantha Brown's Places to Love	PBS NewsHour		Shakespeare & Hathaway-Private Investigators		Agatha Christie's: Poirot**		
Fri. 11/18	Samantha Brown's Places to Love	PBS NewsHour		Native America		Native America		Open Studio with Jared Bowen
Sat. 11/19	The Lawrence Welk Show*	Finding Your Roots Songs of the Past		Searching for Sequoyah				Our Hometown: Nottingham
Sun. 11/20	Escape to the Chateau DIY*	Nature Santa's Wild Home				Civilizations		Finding Your Roots**
Mon. 11/21	Samantha Brown's Places to Love	PBS NewsHour		Midsomer Murders		Mallorca Files		RFDS: Royal Flying Doctor Service**
Tue. 11/22	Samantha Brown's Places to Love	PBS NewsHour		Miss Scarlet and the Duke On Masterpiece		Magpie Murders On Masterpiece		Annika On Masterpiece**
Wed. 11/23	Samantha Brown's Places to Love	PBS NewsHour		Death In Paradise		Frankie Drake Mysteries		Luna & Sophie**
Thu. 11/24	Samantha Brown's Places to Love	PBS NewsHour		Shakespeare & Hathaway-Private Investigators		Agatha Christie's: Poirot**		
Fri. 11/25	Samantha Brown's Places to Love	PBS NewsHour		Native America		Native America		Open Studio with Jared Bowen
Sat. 11/26	The Lawrence Welk Show*	Member Favorites						
Sun. 11/27	Member Favorites*							
Mon. 11/28	Samantha Brown's Places to Love	PBS NewsHour		Member Favorites**				
Tue. 11/29	Samantha Brown's Places to Love	PBS NewsHour		Member Favorites**				
Wed. 11/30	Samantha Brown's Places to Love	PBS NewsHour		Member Favorites				Luna & Sophie**

Please Note: Programs on NHPBS Explore begin before 6:30 PM when marked *. Programs end at 10:30 PM unless marked **
This program schedule is subject to change. Go to nhpbs.org/schedule for the most up-to-date listing of programs.

DISCOVER FRANCE WITH WILLEM LANGE

NH  PBS

New Hampshire PBS
268 Mast Road
Durham, NH 03824

NON-PROFIT ORG
U.S. POSTAGE
PAID
MANCHESTER, NH
PERMIT NO. 724



BOOK BY NOVEMBER 15!
nhpbs.org/travel

**LET'S GET SMARTER
ABOUT GROWING OLDER!**

NHPBS INSIDERS SERIES

CATHLEEN TOOMEY | SENIORITY AUTHORITY

NOVEMBER 17 | 7 PM

ONLINE EVENT TICKETS | nhpbs.org/events

SPONSORED BY:

DF Richard, UnitedHealthcare, Osher School for Lifelong Learning at Granite State College, RiverWoods Group



**SENIORITY
AUTHORITY**

OUR HOMETOWN NOTTINGHAM

NOV 2022

NH  PBS

TOGETHER WE ENGAGE | CONNECT | CELEBRATE