



Diane LaRoche & Barbara Mariacher
NHPBS AUCTION STAFF

BID AND WIN MAY 8-JUNE 12

For staff, volunteers, donors, and faithful bidders, it may be hard to believe that our auction has been taking bids for fifty years, especially once the hard work, creativity and enthusiasm needed to get this beloved event up and running every year is taken into account.

Over the years, dedicated staffers have kept auction on track, volunteers have provided critical manpower, and bidders have supported their NHPBS station as it showcases products from across the region, thanks to thousands of generous donors. From its humble beginnings in the UNH Memorial Union Building and Snively Arena, to its many years at the Pease Tradeport and now its current home at the NHPBS broadcast center in Durham, the auction continues to evolve.

For 46 years, the auction was televised, an event that lasted several days and utilized hundreds of volunteers to take phone bids, post the correct items on revolving auction boards and answer questions for bidders, all on live TV. NHPBS and the Auction Team thank them all for their years of tireless commitment and dedication to fun that made the televised auction so special.

As with many other events and tradition, the pandemic forced the auction to adapt and move online, but even in this new incarnation, auction relies on a small group of volunteers to be successful, but now many are able to volunteer from home.

One integral, longtime volunteer, Richard Shepherd, does data entry from home, as well as helping Auction Manager Diane LaRoche upload items to the website Auction Anything, where it becomes available for bidders.

Barbara Mariacher started volunteering when she was around 12 years old, just a kid coming to an auction with her mom, Marian Kelsey. Now, Barbara is an NHPBS employee and is our one and only donation solicitor. If you've donated to the auction in recent years, chances are you've chatted with Barb. Barbara's mom, Marian turned 90 in April, and after forty years of volunteering, she still helps with mailing auction certificates.

Other dedicated, longtime volunteers include Russell

Manchester, who's been volunteering for more than 20 years, and currently catalogs physical items that have been donated, such as furniture and gift baskets.

Dale and Penny Hardy have been volunteering since the 1970s. They proofread all of auction's certificate donations and also travel all over New England to pick up donations, while Paula Graves picks up items in the western portion of the Granite State.

Our team of copy writers enjoy writing about the diverse donations — RoseAnn Ronnan has been volunteering for more than 30 years, proofreading donations and writing copy for our items. And Marty Thyng, another longtime volunteer, also writes copy for our physical items while Dona Eaton writes copy for all the artworks.

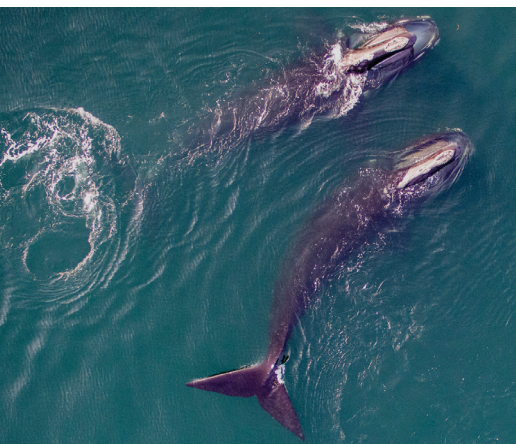
Before any certificates or items are available to bid on, Pam Housley proofreads an amazing 1,500 plus items available for bid once they are uploaded into Auction Anything. We are a small but mighty crew!

Once again, this indefatigable team has brought auction fans another great year of bidding and winning. Just as television viewing has become more accessible, with viewers able to watch live or on-demand and even binge entire series on NHPBS Passport, auction bidders can pop onto the auction website anytime from May 8th through June 12th and see what's up for bid. Most listings will be available for browsing by May 1st, with new listings being added all throughout the auction. Visit auction.nhpbs.org to browse, bid and win!

You can sort by category, follow your favorites and if you've ever been outbid on the amazing Made in NH tote bag, you'll be glad to know that not only will it be sporting the 50th logo, but you can click "Buy It Now", and that highly sought after tote full of local, Made in NH goods, is yours.

Our donors are pulling out all the stops, with a Colonial-style storage shed generously donated by Reeds Ferry Sheds, who also sponsors the auction. Other sponsors are Postal Center USA in Lee and Bank of New Hampshire. Of course, our shelves are also full of gift certificates galore, one of a kind art, beautiful handmade products, jewelry, books, gift baskets, rugs, small furniture, and so much more. **Our golden anniversary is your golden opportunity!**

NHPBS PRIMETIME PICKS



NOVA: Saving the Right Whale WED May 3 | 9 PM NHPBS

The North Atlantic right whale is on the brink of extinction, but a handful of specialists are determined to help save it as they discover new secrets about the lives of these giants of the sea.



My Music with Rhiannon Giddens SUN May 7 | 4:30 PM NHPBS

Grammy winner Rhiannon Giddens hosts a new half-hour series of musical performance and conversation with guest artists — innovative and accomplished musicians and storytellers who have forged unconventional paths to find their voices.



Wild Scandinavia WED May 10 | 8 PM NHPBS

Explore Scandinavia's wild and unpredictable coast — a place of haunting beauty and dangerous extremes. This journey begins around the Swedish Baltic Sea, which includes iconic fjords, home to eagles, otters, base jumpers and orcas.



The Dooky Chase Kitchen SAT May 13 | 11 AM NHPBS

Welcome to the Tremé restaurant, a local landmark where chef Leah Chase became known as the “Queen of Creole Cuisine.” She inspired people through the food, now prepared by those who carry on her unwavering commitment to the people of New Orleans.



American Masters: Nam June Paik TUE May 16 | 9 PM NHPBS

See the world through the eyes of Nam June Paik, the father of video art and the man who coined the term “electronic superhighway.” Experience his creative evolution as Academy Award nominee Steven Yeun reads from Paik's own writings.



Fanny: The Right to Rock MON May 22 | 10 PM NHPBS

In 1960, two Filipina American sisters got together with other teenage girls to play music. Little did they know their garage band would evolve into the legendary rock group Fanny, the first all-women band to release an LP with a major record label.

5 CHANNEL SPOTLIGHT

OUR PRIMARY CHANNEL, NHPBS, IS NOW STREAMED LIVE AT NHPBS.ORG/LIVESTREAM



PUPPY SCHOOL

SUN May 21 | 3 PM **NHPBS**

Hannah and Jack encounter differing parenting styles for their bouncy Labrador Reuben; divorcee Laura has her hands full with a giant Newfoundland puppy; and Deepti and Dave contend with a feisty Dachshund puppy, adopted while undergoing cancer treatment.



TOM JONES ON MASTERPIECE

TUE May 2 | 9 PM **NHPBS EXPLORE**

He is a founding of uncertain parentage, while she is an heiress. In 18th-century England, their class differences make their journey to find each other complicated and treacherous. Solly McLeod stars as the handsome, resourceful title character, with Sophie Wilde as the beautiful and bright, seemingly unattainable love of his life, Sophia Western.



THE CURIOUS TRAVELER

WED May 10 | 10 AM **NH CREATE**

A “field trip for grown-ups,” **CURIOUS TRAVELER** is all about traveling like you’re trying to solve a mystery. Award-winning travel writer and host Christine van Blokland takes viewers to some of the most intriguing cities in the world, asking the “who, what, when, where, why and how” of each location.



FINDING THE VIRGO

THU May 18 | 7 PM **NH WORLD**

Vietnamese boat refugee Lauren Vuong embarks on a decades-long search for the heroic captain and crew of a US cargo ship that rescued her at sea when she was just seven years old, and saved her family and 57 other immigrants from certain death.



WILD KRATTS | NEW SEASON

MON May 22 | 6 PM **NHPBS KIDS**

Join the adventures of Chris and Martin Kratt as they encounter incredible wild animals, combining science education with fun and adventure, while traveling to animal habitats around the globe.

MORE TO EXPLORE



ICONIC AMERICA: OUR SYMBOLS & STORIES
WED May 3 | 10 PM **NHPBS**



THE ARTICULATE HOUR
FRI May 5 | 9 PM **NHPBS**



LUCKY CHOW
SAT May 6 | 4:30 PM **NHPBS**



MARTIN CLUNES: ISLAND OF THE PACIFIC
THU May 18 | 9 PM **NHPBS**



NATIONAL MEMORIAL DAY CONCERT
SUN May 28 | 8 PM **NHPBS**

ON-AIR | MOBILE | ONLINE | CLASSROOMS | COMMUNITY

	6:30 PM	7:00 PM	7:30 PM	8:00 PM	8:30 PM	9:00 PM	9:30 PM	10:00 PM
Mon. 5/1	Samantha Brown's Places to Love	PBS NewsHour		Midsomer Murders		Before We Die		Broadchurch**
Tue. 5/2	Samantha Brown's Places to Love	PBS NewsHour		Call The Midwife		Tom Jones On Masterpiece		Marie Antoinette**
Wed. 5/3	Samantha Brown's Places to Love	PBS NewsHour		Death In Paradise		Ridley Road On Masterpiece		Our Miracle Years**
Thu. 5/4	Samantha Brown's Places to Love	PBS NewsHour		Shakespeare & Hathaway-Private Investigators		Agatha Christie's: Poirot		
Fri. 5/5	Death In Paradise*	PBS NewsHour		Finding Your Roots Against All Odds		Secrets of the Royal Palaces		Open Studio with Jared Bowen
Sat. 5/6	The Lawrence Welk Show*	Finding Your Roots Against All Odds		My Grandparents' War Toby Jones		Kate Humble's Coastal Britain	Kate Humble's Coastal Britain	
Sun. 5/7	Celebrity Antiques Road Trip*	Nature Attenborough's Wonder of Song		Nova Saving The Right Whale		Mr. Tornado: American Experience		My Grandparents' War** Emeli Sande
Mon. 5/8	Samantha Brown's Places to Love	PBS NewsHour		Midsomer Murders		Before We Die		Broadchurch**
Tue. 5/9	Samantha Brown's Places to Love	PBS NewsHour		Call The Midwife		Tom Jones On Masterpiece		Marie Antoinette**
Wed. 5/10	Samantha Brown's Places to Love	PBS NewsHour		Death In Paradise		Hope Street		Our Miracle Years**
Thu. 5/11	Samantha Brown's Places to Love	PBS NewsHour		Shakespeare & Hathaway-Private Investigators		Agatha Christie's: Poirot		
Fri. 5/12	Death In Paradise*	PBS NewsHour		Finding Your Roots The Shirts On Their Backs		Secrets of the Royal Palaces		Open Studio with Jared Bowen
Sat. 5/13	The Lawrence Welk Show*	Finding Your Roots The Shirts On Their Backs		Unsettled History: America, China and the Doolittle Tokyo Raid		Kate Humble's Coastal Britain	Kate Humble's Coastal Britain	
Sun. 5/14	Celebrity Antiques Road Trip*	Wild Scandinavia Life on the Edge		Nova Into The Megavolcano		Hawaii: Islands of Wonder		Madagascar: Islands of Wonder**
Mon. 5/15	Samantha Brown's Places to Love	PBS NewsHour		Midsomer Murders		Jamaica Inn		Broadchurch**
Tue. 5/16	Samantha Brown's Places to Love	PBS NewsHour		Lucy Worsley's Royal Myths & Secrets Elizabeth I: The Warrior Queen		Tom Jones On Masterpiece		Lucy Worsley's Royal Myths & Secrets** Marie Antoinette: The
Wed. 5/17	Samantha Brown's Places to Love	PBS NewsHour		Death In Paradise		Hope Street		What to Do When Someone Dies**
Thu. 5/18	Samantha Brown's Places to Love	PBS NewsHour		Shakespeare & Hathaway-Private Investigators		Agatha Christie's: Poirot		
Fri. 5/19	Death In Paradise*	PBS NewsHour		Finding Your Roots Things We Don't Discuss		Secrets of the Royal Palaces		Open Studio with Jared Bowen
Sat. 5/20	The Lawrence Welk Show*	Finding Your Roots Things We Don't Discuss		Registry		Puppy School	Puppy School**	
Sun. 5/21	Celebrity Antiques Road Trip*	Wild Scandinavia Heartlands		Nova Your Brain: Perception Deception		Hacking Your Mind		Hacking Your Mind**
Mon. 5/22	Samantha Brown's Places to Love	PBS NewsHour		Midsomer Murders		Jamaica Inn		Broadchurch**
Tue. 5/23	Samantha Brown's Places to Love	PBS NewsHour		Lucy Worsley's Royal Myths & Secrets Queen Anne: The Mother of Great Britain		Tom Jones On Masterpiece		Victoria & Albert: The Wedding**
Wed. 5/24	Samantha Brown's Places to Love	PBS NewsHour		Death In Paradise		Hope Street		What to Do When Someone Dies**
Thu. 5/25	Samantha Brown's Places to Love	PBS NewsHour		Agatha Christie's England		Agatha Christie's: Poirot		
Fri. 5/26	Death In Paradise*	PBS NewsHour		Finding Your Roots Fighters		Secrets of the Royal Palaces		Secrets of the Royal Palaces**
Sat. 5/27	The Lawrence Welk Show*	Finding Your Roots Fighters		Her War, Her Story: World War II		Puppy School	Puppy School**	
Sun. 5/28	Celebrity Antiques Road Trip*	Wild Scandinavia Fire and Ice		Nova Your Brain: Who's In Control?		Hacking Your Mind		Hacking Your Mind**
Mon. 5/29	Samantha Brown's Places to Love	PBS NewsHour		Midsomer Murders		Jamaica Inn		Broadchurch**
Tue. 5/30	Samantha Brown's Places to Love	PBS NewsHour		National Memorial Day Concert 2023			Homecoming: Sgt. Hamilton's Long Journey	Victoria & Albert: The Wedding**
Wed. 5/31	Samantha Brown's Places to Love	PBS NewsHour		Death In Paradise		Hope Street		What to Do When Someone Dies**

Please Note: Programs on NHPBS Explore begin before 6:30 PM when marked *. Programs end at 10:30 PM unless marked **
This program schedule is subject to change. Go to nhpbs.org/schedule for the most up-to-date listing of programs.



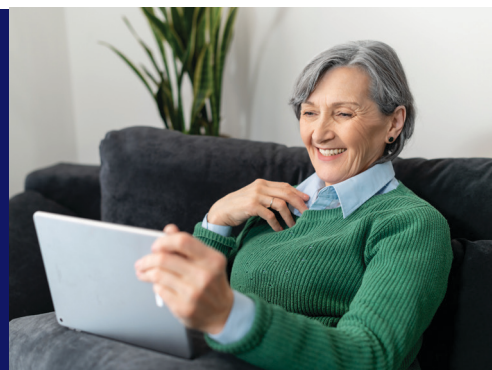
New Hampshire PBS
268 Mast Road
Durham, NH 03824

NON-PROFIT ORG
U.S. POSTAGE
PAID
MANCHESTER, NH
PERMIT NO. 724

MORE WAYS TO WATCH NHPBS!

Did you know that we're LIVE streaming our main channel — NHPBS — for free? It's just like you're watching NHPBS on your TV, but now you can stream NHPBS on any of your devices (computer, tablet or cell phone).

Take NHPBS anywhere at nhpbs.org/livestream



MAY 2023

Funny

THE RIGHT
TO ROCK



TOGETHER WE ENGAGE | CONNECT | CELEBRATE

NH PBS MAY 2023 PROGRAM SCHEDULE

	6:30 PM	7:00 PM	7:30 PM	8:00 PM	8:30 PM	9:00 PM	9:30 PM	10:00 PM
Mon. 5/1	PBS NewsHour*	Joseph Rosendo's Travelscope	Rick Steves' Europe	Antiques Roadshow		Antiques Roadshow		Independent Lens** Matter of Mind: My ALS
Tue. 5/2	PBS NewsHour*	Joseph Rosendo's Travelscope	Basic Black	Finding Your Roots Against All Odds		My Grandparents' War Emeli Sande		In Their Own Words** Queen Elizabeth II
Wed. 5/3	PBS NewsHour*	Joseph Rosendo's Travelscope	Windows to the Wild Record-Setting Hiker	Nature Attenborough's Wonder of Song		Nova Saving The Right Whale		Iconic America: Our Symbols and Stories with David Rubenstein**
Thu. 5/4	PBS NewsHour*	Joseph Rosendo's Travelscope	Granite State Challenge	Windows to the Wild Record-Setting Hiker	Stories from the Stage	Kate Humble's Coastal Britain	Kate Humble's Coastal Britain	
Fri. 5/5	PBS NewsHour*	Joseph Rosendo's Travelscope	Rick Steves' Europe	Washington Week	Firing Line with Margaret Hoover	The Articulate Hour Partial Recall		The Articulate Hour** Together/Alone
Sat. 5/6	Ireland with Michael	Celebrity Antiques Road Trip		Mr. Bean	The Goes Wrong Show	Traces		Death In Paradise**
Sun. 5/7	Opportunity Knock\$	Sister Boniface Mysteries		Call The Midwife		Tom Jones On Masterpiece		Marie Antoinette** Queen of Hearts
Mon. 5/8	PBS NewsHour*	Joseph Rosendo's Travelscope	Rick Steves' Europe	Antiques Roadshow		Antiques Roadshow		Independent Lens** Sam Now
Tue. 5/9	PBS NewsHour*	Joseph Rosendo's Travelscope	Basic Black	Finding Your Roots The Shirts On Their Backs		Finding Your Roots Criminal Kind		Frontline** Secrets, Politics and the Supreme Court
Wed. 5/10	PBS NewsHour*	Joseph Rosendo's Travelscope	Windows to the Wild Kayaking with Cookies	Wild Scandinavia Life on the Edge		Nova Into The Megavolcano		Iconic America: Our Symbols and Stories with David Rubenstein**
Thu. 5/11	PBS NewsHour*	Joseph Rosendo's Travelscope	Granite State Challenge	Windows to the Wild Kayaking with Cookies	Stories from the Stage	Kate Humble's Coastal Britain	Kate Humble's Coastal Britain	
Fri. 5/12	PBS NewsHour*	Joseph Rosendo's Travelscope	Rick Steves' Europe	Washington Week	Firing Line with Margaret Hoover	Great Performances Celebrating 50 Years of Broadway's Best		
Sat. 5/13	Ireland with Michael	Celebrity Antiques Road Trip		Mr. Bean	The Goes Wrong Show	Traces		Death In Paradise**
Sun. 5/14	Opportunity Knock\$	Sister Boniface Mysteries		Lucy Worsley's Royal Myths & Secrets Elizabeth I: The Warrior Queen		Tom Jones On Masterpiece		Lucy Worsley's Royal Myths & Secrets**
Mon. 5/15	PBS NewsHour*	Joseph Rosendo's Travelscope	Rick Steves' Europe	Antiques Roadshow		Antiques Roadshow		Independent Lens** Silent Beauty
Tue. 5/16	PBS NewsHour*	Joseph Rosendo's Travelscope	Basic Black	Finding Your Roots Things We Don't Discuss		American Masters** Nam June Paik		
Wed. 5/17	PBS NewsHour*	Joseph Rosendo's Travelscope	Windows to the Wild Rockhounds	Wild Scandinavia Heartlands		Nova Your Brain: Perception Deception		Iconic America: Our Symbols and Stories with David Rubenstein**
Thu. 5/18	PBS NewsHour*	Joseph Rosendo's Travelscope	Mt. Washington Auto Road to the Sky	Windows to the Wild Rockhounds	Stories from the Stage	Martin Clunes: Islands of the Pacific	Miriam and Alan: Lost In Scotland	
Fri. 5/19	PBS NewsHour*	Joseph Rosendo's Travelscope	Rick Steves' Europe	Washington Week	Firing Line with Margaret Hoover	Great Performances** Richard III		
Sat. 5/20	Ireland with Michael	Celebrity Antiques Road Trip		Mr. Bean	The Goes Wrong Show	Traces		Death In Paradise**
Sun. 5/21	Opportunity Knock\$	Sister Boniface Mysteries		Lucy Worsley's Royal Myths & Secrets Queen Anne: The Mother of Great Britain		Tom Jones On Masterpiece		Secrets of the Royal Palaces**
Mon. 5/22	PBS NewsHour*	Joseph Rosendo's Travelscope	Rick Steves' Europe	Antiques Roadshow		Antiques Roadshow		Fanny: The Right to Rock**
Tue. 5/23	PBS NewsHour*	Joseph Rosendo's Travelscope	Basic Black	Finding Your Roots Fighters		American Experience Goin' Back to T-Town		Frontline** Once Upon A Time In Iraq: Fallujah
Wed. 5/24	PBS NewsHour*	Joseph Rosendo's Travelscope	Windows to the Wild Eco River Run	Wild Scandinavia Fire and Ice		Nova Your Brain: Who's In Control?		Secrets of the Dead**
Thu. 5/25	PBS NewsHour*	Joseph Rosendo's Travelscope	Mount Washington Cog Railway: Climbing to the Clouds	Windows to the Wild Eco River Run	Stories from the Stage	Martin Clunes: Islands of the Pacific	Miriam and Alan: Lost In Scotland	
Fri. 5/26	PBS NewsHour*	Joseph Rosendo's Travelscope	Rick Steves' Europe	Washington Week	Firing Line with Margaret Hoover	Great Performances** Anything Goes		
Sat. 5/27	Ireland with Michael	Celebrity Antiques Road Trip		Mr. Bean	The Goes Wrong Show	Traces		Death In Paradise**
Sun. 5/28	Opportunity Knock\$	Sister Boniface Mysteries		National Memorial Day Concert 2023			National Memorial Day Concert 2023**	
Mon. 5/29	PBS NewsHour*	Joseph Rosendo's Travelscope	Rick Steves' Europe	Antiques Roadshow		Antiques Roadshow		Story of the D-Day Forecast: Three Days In June**
Tue. 5/30	PBS NewsHour*	Joseph Rosendo's Travelscope	Basic Black	Finding Your Roots Songs of the Past		Lidia Celebrates America		Frontline** America's Dangerous Trucks
Wed. 5/31	PBS NewsHour*	Joseph Rosendo's Travelscope	Windows to the Wild Adventures with Floki	Nature Pandas: Born to Be Wild		Nova Why Ships Crash		Secrets of the Dead**

Please Note: Programs on NHPBS begin before 6:30 PM when marked *. Programs end at 10:30 PM unless marked **. This program schedule is subject to change. Go to nhpbs.org/schedule for the most up-to-date listing of programs.

Watch online anytime at nhpbs.org | video.nhpbs.org