



THE POWER OF YOUR SUPPORT



NHPBS President & CEO
Peter Frid

As we approach the 250th anniversary of the signing of the Declaration of Independence, I find that looking back can inspire optimism about the future. Those of you who have watched Ken Burns's *THE AMERICAN REVOLUTION* know that our shared history holds great wisdom about how to face the challenges of the present. As I write

this, New Hampshire PBS is preparing for the event *KEN BURNS AND THE AMERICAN IDEA* on June 9th, where Burns will share the lessons he's learned from a career of making films about America. One of the things I've learned from Burns's work is the power of commitment.

Your commitment to public media, as we faced a year full of unprecedented challenges, is one example that fills me with hope. When Congress rescinded federal funding for PBS and NPR stations across the country, NHPBS lost \$1.3 million, or 18% of our budget, overnight. It was a big loss for our small station. Still, our resolve to serve the Granite State remained strong, and your support of NHPBS grew even stronger. In an age that sees billionaires buying up massive media conglomerates and threats to freedom of speech consistently making headlines, you stood up to say that local, independent public media matters to you.

Because of you, we were able to celebrate a new group of young scholars on *GRANITE STATE CHALLENGE*. Not only did you give these kids a moment in the spotlight that celebrated their academic skills, you gave them an experience they'll carry with them for years. When I spoke to this year's contestants, I was struck by how much they loved their time on the show. Whether it was having question cards signed by host Jon Cannon, making new friends or bonding with their teammates as they planned game strategy, your support of NHPBS provided them with an experience they couldn't get on TikTok, Instagram or anywhere else.

NHPBS' commitment to getting kids excited about learning was also integral to the re-launch of our *NatureWorks* website, an online encyclopedia of the natural world that's been wildly popular with students and teachers since it first launched in the 2000s.

After years of patient planning, we recently debuted a beautiful and more mobile-friendly site. Now, whether students are learning in a classroom or on a computer, a tablet or a phone, they'll have easy access to the reliable information of *NatureWorks*. Don't let the kids have all the fun—look up your favorite animal at natureworks.nhpbs.org.

Your support has also helped *WINDOWS TO THE WILD* move forward in exciting new ways, making it possible for producers to launch a digital-first format, bringing bite-sized outdoor stories to thousands of new viewers on YouTube and social media.

Now, the *WINDOWS* team is building on that momentum. A new season is in production, with fresh stories that explore how people connect with the outdoors. Hopefully, we'll inspire you to get out there too!

Because of you, we're expanding how we inform and empower viewers around aging and planning ahead. Cathleen Toomey and the *SENIORITY AUTHORITY* team are already hard at work mapping out a new season of stories to help us all get smarter about growing older.

Creating informative, educational and inspiring content takes time and money, and your continued support is vital. When you become a sustaining member, you provide the steady foundation we need to keep essential programming strong.

With our fiscal year ending June 30th, now is a critical time to give. Our Program Fund \$100,000 match is in the final push, and every dollar you donate will be doubled. Your support will help us bring you beloved British series and local shows that celebrate our communities.

Make your gift today at nhpbs.org/match, and choose a colorful bandana with hand-drawn icons of New Hampshire life as your thank-you gift.

Whether you're a new member or have supported NHPBS for years, we're grateful for you. And with your continued support, we can keep building a stronger future for public media in New Hampshire.

NHPBS PRIMETIME PICKS



**Celebrating America 250:
Made With Love**

MON Jun 1 | 9 PM NHPBS

Explore America's founding spirit through the work of artisans whose traditions helped shape the nation. From boatbuilders to blacksmiths to a glassblower remaking the ancient art, these creators illustrate the many cultures that built this country.



Patience Season 2

SUN Jun 14 | 8 PM NHPBS

Criminal records librarian Patience is back to help tackle crimes in York. When new detective Frankie Monroe bursts onto the scene, her introduction to Patience doesn't go well. The two women must find a way to work together and become a formidable investigative team.



**Grantchester Season 11
on Masterpiece**

SUN Jun 14 | 9 PM NHPBS

In the momentous summer of 1963, Alphy's growing connection with Meg coincides with more discoveries about his past, and Geordie receives a tempting offer at work. The last chapter of GRANTCHESTER promises self-discovery, hope and transformation.



The Last Twins

MON Jun 15 | 10 PM NHPBS

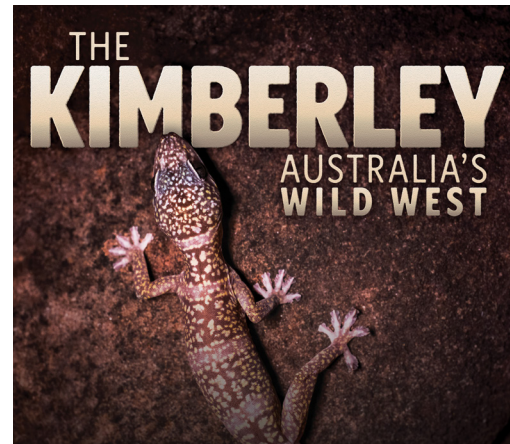
Discover the extraordinary story of Erno "Zvi" Spiegel, an unsung hero of the Holocaust who risked everything to protect twin boys targeted by Dr. Josef Mengele for brutal medical experimentation in Auschwitz.



Becoming Katharine Graham

TUE Jun 16 | 9 PM NHPBS

Uncover the story of a painfully shy woman's accidental rise to power. After a family tragedy, Kay Graham evolved from a "doormat wife" into a legendary newspaper publisher. Nixon's nemesis during Watergate, she fought for truth and broke barriers in a sexist world.



**The Kimberley:
Australia's Wild West**

WED Jun 17 | 10 PM NHPBS

Explore a land that defies time. *The Kimberley* spans remote tropical wilderness: turquoise coastlines, towering gorges, sandy deserts and sprawling savanna. Follow a year in the wild lives of the animals who call this majestic area home.

5 CHANNEL SPOTLIGHT

NO CABLE? NO PROBLEM. WATCH ALL NHPBS CHANNELS AT NHPBS.ORG/LIVESTREAM.



WHAT'S THE STORY, WISHBONE?

MON Jun 8 | 9 PM NHPBS

Go behind the scenes of the beloved PBS series that turned classic literature into adventure, starring one unforgettable little dog with a very big imagination. Through rare archival footage and new interviews with the cast, creators and fans, the film uncovers the heartfelt story of how a scrappy public television production became a cultural touchstone.



SOLVING THE PUZZLES OF THE MARLOW MURDER CLUB

THU Jun 4 | 9 PM NHPBS EXPLORE

THE MARLOW MURDER CLUB follows three spunky amateur sleuths as they solve mysteries and, usually, get into some trouble along the way. This behind-the-scenes special delves into the series, with interviews from the cast and crew, before the new season returns in September.



POLLINATOR LOVE MARATHON

FRI Jun 5 | 9 PM NH CREATE

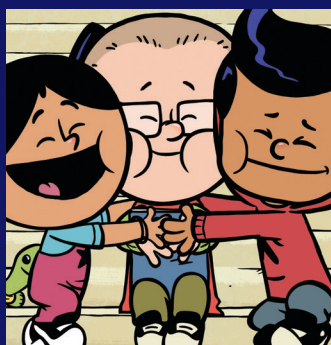
June is Pollinator Month, and we're spreading love for these little beauties and what they produce, which includes nearly a third of our food and endless artistic inspiration. See the good of pollinators and how you can help them in your own backyard with episodes from GROWING A GREENER WORLD, MODERN PIONEERING and many more.



INDEPENDENT LENS: ASSEMBLY

WED Jun 24 | 8 PM NH WORLD

Artist Rashaad Newsome prepares to showcase *Assembly*, a groundbreaking exhibit at New York's Park Avenue Armory. By blending visual art, performance and artificial intelligence, the project centers the global evolution of vogue while honoring Black and queer resistance and calling for a more liberated future.



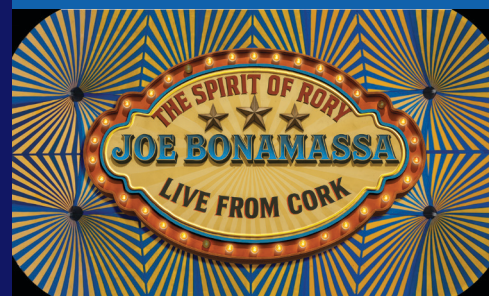
XAVIER RIDDLE CELEBRATES AMERICAN HEROES

TUE Jun 30 | 7:30 PM NHPBS KIDS

Over four special episodes, XAVIER RIDDLE AND THE SECRET MUSEUM celebrates "ordinary" American kids who went on to do extraordinary things, from Julia Child and Mark Twain to Jackie Robinson, Billie Jean King, The Wright Brothers and more.

WARM DAYS COOL MUSIC

FIND TICKETS AT NHPBS.ORG/EVENTS



JOE BONAMASSA: THE SPIRIT OF RORY
WED Jun 3 | 9 PM NHPBS



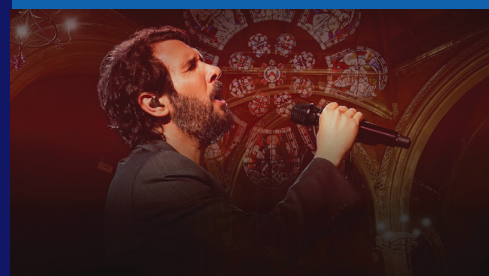
BILLY JOEL: THE 100TH
LIVE AT MADISON SQUARE GARDEN
THE COMPLETE CONCERT
WED Jun 3 | 10:30 PM NHPBS



JOANNE SHAW TAYLOR LIVE
THU Jun 4 | 8:30 PM NHPBS



WILLIE NELSON'S 90TH BIRTHDAY
CELEBRATION
THU Jun 4 | 10 PM NHPBS



GREAT PERFORMANCES – JOSH GROBAN:
AN EVENING AT UNION CHAPEL
SAT Jun 6 | 9 PM NHPBS

NH PBS JUNE 2026 PROGRAM SCHEDULE

	6:30 PM	7:00 PM	7:30 PM	8:00 PM	8:30 PM	9:00 PM	9:30 PM	10:00 PM
Mon. 6/1	PBS News Hour*	Weekends with Yankee	Antiques Roadshow			Celebrating America 250: Made with Love		
Tue. 6/2	PBS News Hour*	Weekends with Yankee	Making of the American Revolution				Lucy Worsley Investigates: The American Revolution**	
Wed. 6/3	PBS News Hour*	Weekends with Yankee	More Deconstructing The Beatles			Joe Bonamassa: The Spirit of Rory Live from Cork		
Thu. 6/4	PBS News Hour*	Weekends with Yankee	Wild Foods	Windows to the Wild A Trek Through Scotland	Joanne Shaw Taylor Live			Willie Nelson's 90th Birthday Celebration
Fri. 6/5	PBS News Hour*	Weekends with Yankee	Rick Steves' Europe	Washington Week with the Atlantic	Firing Line with Margaret Hoover	The American Revolution: An Inside Look		All New Rock, Pop and Doo Wop (My Music Presents)
Sat. 6/6	All Creatures Great and Small: Seasons of the Dales			Father Brown		Great Performances** Josh Groban: An Evening at Union Chapel		
Sun. 6/7	Great Performances Josh Groban: An Evening at Union Chapel				Our Favorite Things About Grantchester		Downton Abbey Season 1 On Masterpiece	
Mon. 6/8	PBS News Hour*	Weekends with Yankee	Weekends with Yankee	Antiques Roadshow		What's The Story, Wishbone?		
Tue. 6/9	PBS News Hour*	Weekends with Yankee	Burt Wolf: Travels & Traditions	Finding Your Roots American Dreams		Woodstock: Three Days That Defined A Generation: American Experience**		
Wed. 6/10	PBS News Hour*	Weekends with Yankee	Windows to the Wild A Trek Through Scotland	Nature Museum Alive with David Attenborough		NOVA Alaskan Dinosaurs		Secrets of the Dead** Ben Franklin's Bones
Thu. 6/11	PBS News Hour*	Weekends with Yankee	Wild Foods	Windows to the Wild Journey Across Ireland	Granite State Challenge	Agatha Christie: Lucy Worsley on the Mystery Queen		Agatha Christie: Lucy Worsley on the Mystery Queen**
Fri. 6/12	PBS News Hour*	Weekends with Yankee	Rick Steves' Europe	Washington Week with the Atlantic		American Masters** Janis Ian		
Sat. 6/13	Curious Traveler	Miss Fisher's Murder Mysteries		Father Brown		Sister Boniface Mysteries		The Puzzle Lady**
Sun. 6/14	Granite State Challenge	Sense and Sensibility		Patience		Grantchester On Masterpiece		Downton Abbey Season 2 On Masterpiece
Mon. 6/15	PBS News Hour*	Weekends with Yankee	Weekends with Yankee	Antiques Roadshow		Antiques Roadshow		The Last Twins**
Tue. 6/16	PBS News Hour*	Weekends with Yankee	Burt Wolf: Travels & Traditions	Finding Your Roots Great Migrations		Becoming Katharine Graham**		
Wed. 6/17	PBS News Hour*	Weekends with Yankee	Windows to the Wild Journey Across Ireland	Nature Wildheart		NOVA Secrets of the Forest		The Kimberley: Australia's Wild West**
Thu. 6/18	PBS News Hour*	Weekends with Yankee	Wild Foods	Windows to the Wild Discover France	Granite State Challenge	Mount Washington Cog Railway: Climbing to the Clouds	Mt. Washington Auto Road to the Sky	The Game of Village**
Fri. 6/19	PBS News Hour*	Weekends with Yankee	Rick Steves' Europe	Washington Week with the Atlantic	Firing Line with Margaret Hoover	George H.W. Bush: American Experience**		
Sat. 6/20	Curious Traveler	Miss Fisher's Murder Mysteries		Father Brown		Sister Boniface Mysteries		The Puzzle Lady**
Sun. 6/21	Granite State Challenge	Sense and Sensibility		Patience		Grantchester On Masterpiece		Downton Abbey Season 2 On Masterpiece**
Mon. 6/22	PBS News Hour*	Weekends with Yankee	Weekends with Yankee	Antiques Roadshow		Antiques Roadshow		Independent Lens** Assembly
Tue. 6/23	PBS News Hour*	Weekends with Yankee	Burt Wolf: Travels & Traditions	Finding Your Roots The Ties That Bind		Lucy Worsley Investigates: The American Revolution		Frontline**
Wed. 6/24	PBS News Hour*	Weekends with Yankee	Windows to the Wild Discover France	Nature American Horses		NOVA Ancient Desert Death Trap		The Kimberley: Australia's Wild West**
Thu. 6/25	PBS News Hour*	Weekends with Yankee	Wild Foods	Windows to the Wild Off to Portugal	Granite State Challenge	Women on the Water		All Too Clear: Beneath The Surface of the Great Lakes**
Fri. 6/26	PBS News Hour*	Weekends with Yankee	Rick Steves' Europe	Firing Line with Margaret Hoover		George H.W. Bush: American Experience		
Sat. 6/27	Curious Traveler	Miss Fisher's Murder Mysteries		Father Brown		Sister Boniface Mysteries		The Puzzle Lady**
Sun. 6/28	Granite State Challenge	Sense and Sensibility		Patience		Grantchester On Masterpiece		Downton Abbey Season 2 On Masterpiece**
Mon. 6/29	PBS News Hour*	Weekends with Yankee	Weekends with Yankee	Antiques Roadshow		Antiques Roadshow		Declarations: Black Americans and the Revolutionary War**
Tue. 6/30	PBS News Hour*	Weekends with Yankee	Burt Wolf: Travels & Traditions	Finding Your Roots Secret Lives		Lucy Worsley Investigates: The American Revolution		Frontline**

Please Note: Programs on NHPBS begin before 6:30 PM when marked *. Programs end at 10:30 PM unless marked **
This program schedule is subject to change. Go to nhpbs.org/schedule for the most up-to-date listing of programs.

Watch online anytime at nhpbs.org | video.nhpbs.org

	6:30 PM	7:00 PM	7:30 PM	8:00 PM	8:30 PM	9:00 PM	9:30 PM	10:00 PM
Mon. 6/1	Rick Steves Heart of Italy*	PBS News Hour		Great Performances Josh Groban: An Evening at Union Chapel			Rick Steves Art of Europe: Michelangelo to Monet	
Tue. 6/2	60 and 70s Soul Celebration	PBS News Hour		Joanne Shaw Taylor Live			Rick Steves Art of Europe: Beauty Through The Ages	Downton Abbey Season 1 On Masterpiece
Wed. 6/3	Epic Train Journeys from Above*	PBS News Hour		All Creatures Great and Small: Seasons of the Dales			Lucy Worsley Investigates: The American Revolution**	
Thu. 6/4	Celebrating America 250: Made with Love*	PBS News Hour		Father Brown		Solving The Puzzles of the Marlow Murder Club		
Fri. 6/5	Rick Steves Art of Europe: Beauty Through The Ages	PBS News Hour		Great Scenic Railway Journeys 30th Anniversary Special				Making of the American Revolution
Sat. 6/6	The Lawrence Welk Show*	Lucy Worsley Investigates: The American Revolution		Lucy Worsley Investigates: The American Revolution			All Creatures Great and Small: Seasons of the Dales**	
Sun. 6/7	Great Scenic Railway Journeys 30th Anniversary Special*		Epic Train Journeys from Above		Joe Bonamassa: The Spirit of Rory Live from Cork			More Deconstructing The Beatles**
Mon. 6/8	Samantha Brown's Places to Love	PBS News Hour		Sanditon On Masterpiece		Lucy Worsley Investigates		Lucy Worsley Investigates**
Tue. 6/9	Samantha Brown's Places to Love	PBS News Hour		Rick Steves Mighty Alps	Our Favorite Things About Grantchester			Downton Abbey Season 1 On Masterpiece
Wed. 6/10	Samantha Brown's Places to Love	PBS News Hour		Agatha Christie: Lucy Worsley on the Mystery Queen		Agatha Christie: Lucy Worsley on the Mystery Queen		Agatha Christie: Lucy Worsley on the Mystery Queen**
Thu. 6/11	Samantha Brown's Places to Love	PBS News Hour		Father Brown		Sister Boniface Mysteries		Lucy Worsley Investigates**
Fri. 6/12	Samantha Brown's Places to Love	PBS News Hour		Finding Your Roots American Dreams		Woodstock: Three Days That Defined A Generation: American Experience**		
Sat. 6/13	The Lawrence Welk Show*	Finding Your Roots American Dreams		American Masters Janis Ian				Elton John & Bernie Taupin: The Gershwin Prize for Popular Song
Sun. 6/14	Antiques Roadshow*	Nature Museum Alive with David Attenborough		NOVA Alaskan Dinosaurs		Secrets of the Dead Ben Franklin's Bones		Secrets of the Dead** Jamestown's Dark Winter
Mon. 6/15	Samantha Brown's Places to Love	PBS News Hour		Sanditon On Masterpiece		Miss Fisher's Murder Mysteries		Astrid**
Tue. 6/16	Samantha Brown's Places to Love	PBS News Hour		Grantchester On Masterpiece		Downton Abbey Season 2 On Masterpiece**		
Wed. 6/17	Samantha Brown's Places to Love	PBS News Hour		Magpie Murders On Masterpiece		The Marlow Murder Club On Masterpiece		The Puzzle Lady**
Thu. 6/18	Samantha Brown's Places to Love	PBS News Hour		Father Brown		Sister Boniface Mysteries		Patience**
Fri. 6/19	Samantha Brown's Places to Love	PBS News Hour		Finding Your Roots Great Migrations		Becoming Katharine Graham**		
Sat. 6/20	The Lawrence Welk Show*	Finding Your Roots Great Migrations		George H.W. Bush: American Experience				The Tuskegee Airmen: Return to Ramitelli**
Sun. 6/21	Antiques Roadshow*	Nature Wildheart		NOVA Secrets of the Forest		The Kimberley: Australia's Wild West		Outback**
Mon. 6/22	Samantha Brown's Places to Love	PBS News Hour		Sanditon On Masterpiece		Miss Fisher's Murder Mysteries		Astrid**
Tue. 6/23	Samantha Brown's Places to Love	PBS News Hour		Grantchester On Masterpiece		Downton Abbey Season 2 On Masterpiece		World On Fire On Masterpiece**
Wed. 6/24	Samantha Brown's Places to Love	PBS News Hour		Magpie Murders On Masterpiece		The Marlow Murder Club On Masterpiece		The Puzzle Lady**
Thu. 6/25	Samantha Brown's Places to Love	PBS News Hour		Father Brown		Sister Boniface Mysteries		Patience**
Fri. 6/26	Samantha Brown's Places to Love	PBS News Hour		Finding Your Roots The Ties That Bind		American Experience** Casa Susanna		
Sat. 6/27	The Lawrence Welk Show*	Finding Your Roots The Ties That Bind		George H.W. Bush: American Experience			The American Revolution: An Inside Look	American Experience** The American Vice President
Sun. 6/28	Antiques Roadshow*	Nature American Horses		NOVA Ancient Desert Death Trap		The Kimberley: Australia's Wild West		Outback**
Mon. 6/29	Samantha Brown's Places to Love	PBS News Hour		Sanditon On Masterpiece		Miss Fisher's Murder Mysteries		Astrid**
Tue. 6/30	Samantha Brown's Places to Love	PBS News Hour		Grantchester On Masterpiece		Downton Abbey Season 2 On Masterpiece		World On Fire On Masterpiece**

Please Note: Programs on NHPBS Explore begin before 6:30 PM when marked *. Programs end at 10:30 PM unless marked **
This program schedule is subject to change. Go to nhpbs.org/schedule for the most up-to-date listing of programs.

**DOWNLOAD
THE FREE
PBS APP***



NOW ON LG SMART TVs



* Local PBS station membership required to access some content



New Hampshire PBS
268 Mast Road
Durham, NH 03824

NON-PROFIT ORG
U.S. POSTAGE
PAID
MANCHESTER, NH
PERMIT NO. 724

**\$100K
MATCH**

**SUPPORT LOCAL
PUBLIC TELEVISION!**

**NHPBS
Program
Fund**

DONATE

nhpbs.org/match



**Get Your Exclusive
BRAINSTORM
Bandana!**



**GRANTCHESTER:
THE FINAL SEASON**

JUN 2026

TRUSTED. VALUED. ESSENTIAL.